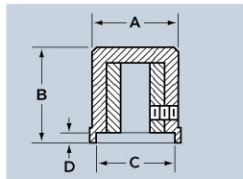




3008



3440



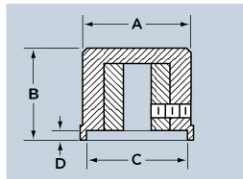
Part Number		NUT CLEARANCE		TO COMPLETE PART NUMBER			
Without Line	With Line	A Diam.	B Height	C Diam.	D Depth	Shaft Hole	Color
3008	3440	.500	.625	.430	.070	1 2 3 4	B S G J



3488



3489



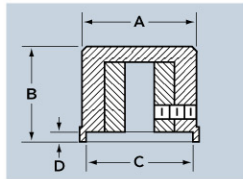
Part Number		NUT CLEARANCE		TO COMPLETE PART NUMBER			
Without Line	With Line	A Diam.	B Height	C Diam.	D Depth	Shaft Hole	Color
3488	3489	.720	.620	.625	.030	1 2 3 4	B S G J



3009



3441



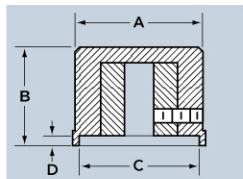
Part Number		NUT CLEARANCE		TO COMPLETE PART NUMBER			
Without Line	With Line	A Diam.	B Height	C Diam.	D Depth	Shaft Hole	Color
3009	3441	.850	.600	.680	.125	1 2 3 4	B S G J



3010



3442



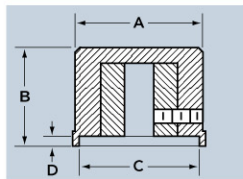
Part Number		NUT CLEARANCE		TO COMPLETE PART NUMBER			
Without Line	With Line	A Diam.	B Height	C Diam.	D Depth	Shaft Hole	Color
3010	3442	.975	.750	.810	.225	1 2 3 4	B S G J



3011



3443



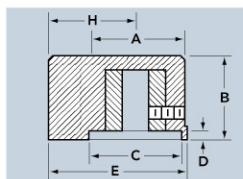
Part Number		NUT CLEARANCE		TO COMPLETE PART NUMBER			
Without Line	With Line	A Diam.	B Height	C Diam.	D Depth	Shaft Hole	Color
3011	3443	1.250	.800	1.000	.225	1 2 3 4	B S G J



3013



3444



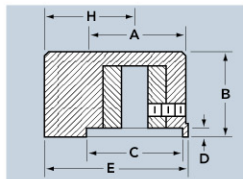
Part Number		NUT CLEARANCE		TO COMPLETE PART NUMBER					
Without Line	With Line	A Diam.	B Height	C Diam.	D Depth	E Length	H Swing	Shaft Hole	Color
3013	3444	.500	.625	.430	.070	.780	.500	1 2 3 4	B S G J



3014



3445



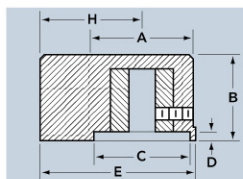
Part Number		NUT CLEARANCE		TO COMPLETE PART NUMBER					
Without Line	With Line	A Diam.	B Height	C Diam.	D Depth	E Length	H Swing	Shaft Hole	Color
3014	3445	.720	.620	.625	.030	1.00	.630	1 2 3 4	B S G J



3015



3446



Part Number		NUT CLEARANCE		TO COMPLETE PART NUMBER					
Without Line	With Line	A Diam.	B Height	C Diam.	D Depth	E Length	H Swing	Shaft Hole	Color
3015	3446	.850	.600	.680	.125	1.24	.800	1 2 3 4	B S G J

ORDERING GUIDE FOR 3000 SERIES

Style	Shaft Hole	Color
Plain Top	.250"	Matte Black
3010-	2	- B

EXAMPLE: 3010-2-B

Style	Shaft Hole	Color
Indicate Part Number from Tables Above	1- 1/8" Round 2- 1/4" Round 3- 1/2" "D" hole 4- 3/4" "D" hole	B- Matte Black S- Gloss Black G- Matte Gray J- Gloss Gray

All 3000 Series knobs come standard with 2 set screws.

